



**Leary Integrated  
Arts & Technology**

**October 2024**

## **Happy October Leary Lions!**

Wow! How did that happen? It felt like we flew through September and now finishing off the second week of October, even though our weather feels more like August with a sprinkling for fall rains.

Lots has been happening at Leary IAT. Our school community raised money for Terry Fox Foundation, our Indigo Love of Reading Fundraiser has been a huge success and Mrs. Larsen will be getting new books for our library, our older students learned bike safety, students started the annual Foundational Skills Assessment (FSA), and our soccer and cross-country teams have been in full swing.

We recognized National Truth and Reconciliation Day learning and honouring the children who never returned home and Survivors of residential schools, as well as their families and communities.

We thanked and celebrated all Leary staff on World Teacher Day. Thanks Leary staff for your continued hard work, passion, and inspiring positivity that you bring each day.

Mrs. Shelley Burke and Mr. Brad Driscoll

## **REMINDERS**



- Oct. 14 – Thanksgiving (school closed to staff and students)
- Oct. 17 – PAC Meeting @ 1:00 in Drama Studio
- Oct. 18 – Early Dismissal @ 11:20 for Student-Led Conferences
- Oct. 24 – PAC Hot Lunch & Student Photo Retakes
- Oct. 25 – Pro-D Day (school closed to students)
- Nov. 1 – Assessment & Evaluation Day (school closed to students)

# ATTENDANCE REPORTING

At Leary IAT, one of our greatest priorities is ensuring that all our students arrive safely to school each and every day.

Parents/caregivers report student absences through SafeArrival. This system reduces the time it takes to verify student attendance, make it easy for you to report your child's absence and easy for staff to respond to unexplained student absences.

With SafeArrival, you report your child's absence in advance using any of these 3 convenient methods:

1. Using your mobile device.
2. Use the SafeArrival website,
3. Call the toll-free number  
1-833-698-6567

**MORE INFORMATION:**

<https://sd33.bc.ca/safe-arrival>





# Parking



A HUGE thank you to all of you who have changed some transportation habits to help keep our front parking lot as safe as possible for students. After the email about concerning behaviours was sent, there was a noticeable change. However, and as we all know, some habits are harder to kick than others and some of the ***CONCERNING BEHAVIOURS*** are starting to creep back in.

***PLEASE DO ALL THAT YOU CAN TO PRACTICE THESE RESPONSIBLE BEHAVIOURS...THANK YOU!***

## 1. Walk or roll

- Roughly 70% of our school lives in-catchment and within the 3 kilometre walking distance for elementary students. Vehicle congestion drastically decreases when more people walk or roll.

## 2. Drop Off Quickly

- Limit your drop-off time to 15 seconds and then merge into the thru lane. DO NOT PARK IN DROP-OFF LANE.

## 3. Use Walden Park

- When space is available, park and have your child walk to your car or meet them at your meeting spot

## 4. Delay your pick-up

- Traffic lessens around 2:25

***PLEASE...PLEASE...PLEASE...DO NOT:***

**Stay in the curb lane for extended periods of time - it is a pick-up/drop-off lane, not a parking lane**

**Stay in your vehicle. Teach your child to exit on the passenger side. They can do it!**

**Remind your child to not use the thru-lane to enter or exit your vehicle...just not safe**

***WE CAN Do THIS***

# RAINY DAYS

**Leary Lions are tough! We go outside each day for recess and lunch regardless of the weather. Well, not exactly. During extreme weather, we stay inside.**

**HOWEVER, please help your child keep a spare change of clothes at school for those days when they get a little mucky after a fun time playing outside. It's best to keep them in a large ziplock bag with their name on it.**

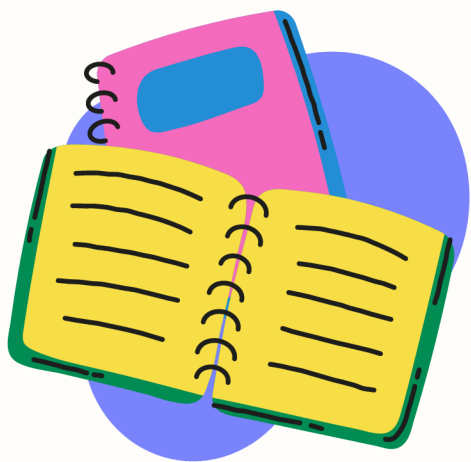
**By having a change of clothes at school, your child doesn't need to bother you during your work or personal time.**



## FAMILY ACCIDENT RIEMBURSEMENT PLAN

The Chilliwack School District or Schools Protection Program (SPP) does not insure expenses for student injuries that happen on school grounds or during school activities. Parents/Guardians are responsible for these expenses. iA Financial Group offers a comprehensive accident insurance plan with a critical illness component designed for the whole family.

To apply or to find out more, visit <https://sd33.bc.ca/accident-insurance>



# Reminders



## Nut-Aware School Policy

At Leary IAT Elementary, there are classrooms with students who have severe allergies to peanuts, nuts, and other food items. October 2024 ROAR - US Letter that students are allergic to may be prohibited. Classroom teachers will send home information telling parents know of products not allowed in the classroom. We ask for your cooperation in continuing to provide safe learning environments for our students, your children.

## Inside Shoes



We greatly appreciate all the hard work Mr. Payne and Mr. Hamanaka (our custodial staff) do each day to keep Leary looking so clean. To assist them, we ask students to wear inside shoes while in the school. If you haven't yet been able to, please have your child bring a pair of shoes they can keep at school. We realize some families may not have had a chance to get another pair of shoes. Students can wear what they have until another pair can be brought to school. Thank you for your assistance.

# GaGa Ball

Gaga Ball is closed before school  
AND  
after school at 2:33, when supervision ends.







## Learning Communities

At Leary Integrated Arts & Technology, we thrive together as a community of learners – students, staff, families, and guests. The work we do each day is founded on four principles: Integrated Disciplines, Authentic Learning, Collaborative Culture, and Visionary Staff. In an age-appropriate manner, students will be empowered at the centre of their learning by:

- developing a deep understanding around foundational skills (writing, reading, mathematics) and **B.C. Curriculum** outcomes,
- **thinking, reflecting, and learning** to see themselves as strong learners for a lifetime, and
- learning how to transfer their understandings and skills in novel ways that are intellectually engaging through **Project Based Learning** opportunities designed to promote learner voice, choice, and interests.

### What is a Learning Community?

Students learn in **Learning Communities** which are made up of combination grades, 3 classroom teachers, 1 Inclusive Design Teacher, and several support staff. **Learning Communities** allow for cross class community building throughout our school, providing for deep learner relationships to form across ages, opportunities for older learners to be leaders, and connecting learners together based on interests, passions, and learning rather than based on age. At Leary IAT, we will know each student deeply, both as a learner and as a person, enabling us to tap into their passions to design challenging Learning, enriching their experience.

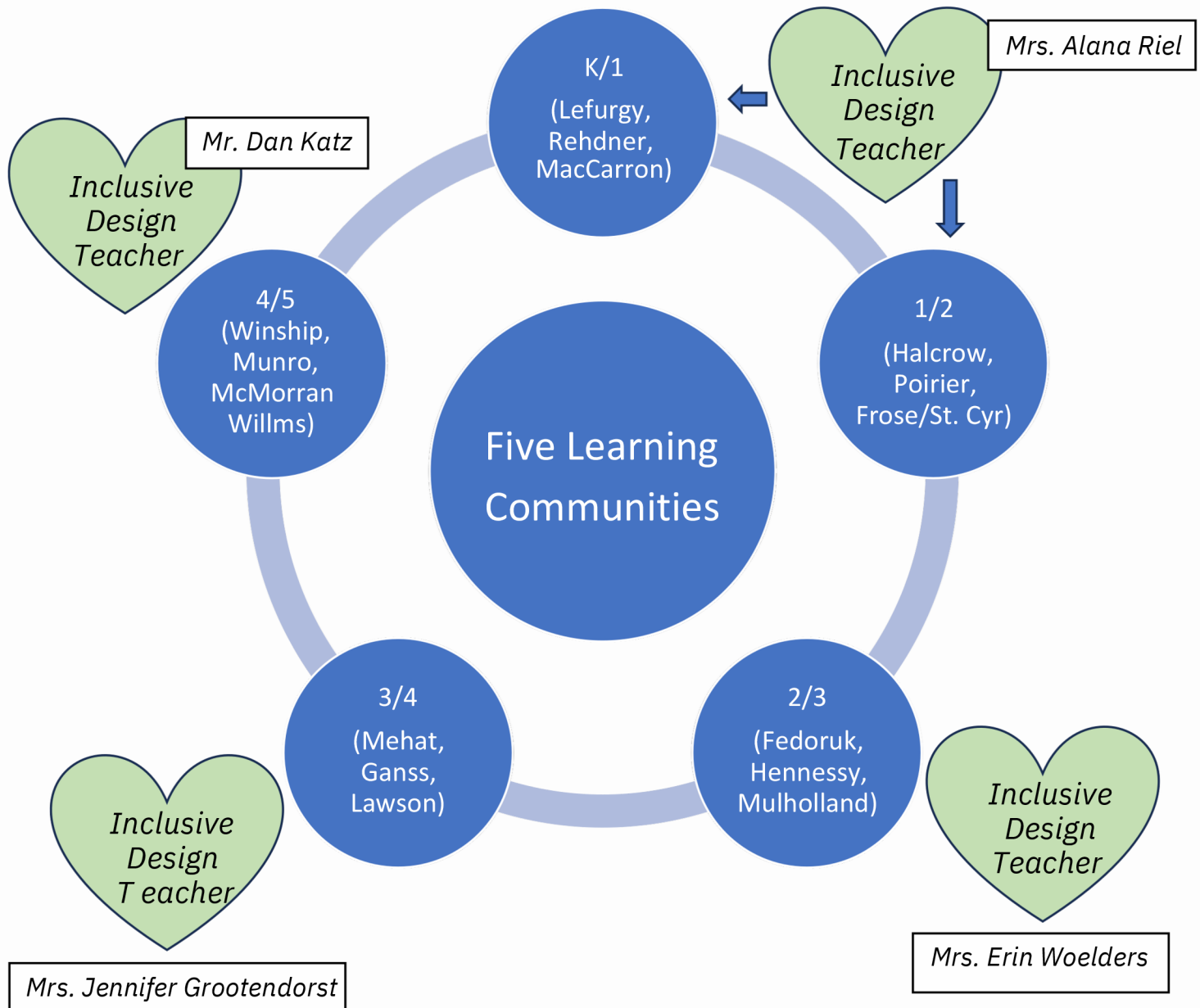
Our role as educators in a **Learning Community** will be to act as co-designers of rich learning experiences, working alongside learners, where their passions and agency are developed and nurtured. The curricular design will shift to greater integration of disciplines so that learners can demonstrate **B.C. Curricular Competencies**. As well, the physical environment will be designed to serve a more learner-centered, flexible, multi-disciplinary, multi-graded learning design. We will work hard and together to ensure each learner has the essential understandings, competencies, and dispositions to thrive.

Leary IAT students will have several opportunities within their **Learning Community** supported by our **Core Values** of equity, kindness, inclusion, collaboration, and innovation through:

- A flexible schedule responsive to learner needs.
- Learners and teachers teamed in learning communities to foster deeper peer relationships and social-emotional well-being.
- Deeper relationships with teams of teachers resulting in more responsive learning experiences, better parent communication, and greater learner success.
- Opportunities encouraging connections across the entire school community. Each learner will have adult advocates.



## Learning Communities



*Each Learning Community is comprised of a group of multi-graded students, 3 classroom teachers, 1 Inclusive Design Teacher, and several support staff.*

**October 8, 2024**

Dear Leary Families,

I am very excited to announce that the Leary Library will be hosting the Scholastic Book Fair this year from October 15th to 18th! I am thrilled to be part of an event that inspires such interest and joy in reading and books. This event is also a wonderful fundraising opportunity that directly supports our library and school reading events. Students will have the opportunity to purchase books from the Book Fair during set times in the school day Tuesday through Friday. The Book Fair is also open to families after school from 2:30-3:30 on Tuesday and Wednesday, 2:30-6:00 on Thursday, and 11:30-2:30 on Friday. Student transactions during the school day will be cash only, but we do accept debit and credit cards for family members after school. Thank you to all our community members for their generous support of student learning and the Leary Library Program. Happy reading everyone!

Sincerely,

Mrs. Larsen

Teacher Librarian

Leary Integrated Arts and Technology Elementary School



# SD33 EARLY YEARS

Welcome to Early Learning

Chilliwack School District

## SD33 Early Learning and Child Care

The Chilliwack School District provides various early learning and child care options. Our vision is to expand and enhance our range of services, offering families a selection of inclusive, accessible, reliable, and universally available early learning and child care programs.

## FEATURED PROGRAMS



### STRONGSTART

For adults and their young children, aged birth to five (families need to register their children through e-reg)



### LITTLE EXPLORERS

Adrop-in program for adults and their young children, aged birth to five (no registration required)  
Vedder Elementary - Mon. & Thur. 11:45-1:30  
Robertson Elementary - Tues. & Fri. 11:45-1:30



### EARLY YEARS FAMILY NAVIGATOR

Amber Mothus, the Early Years Family Navigator, can assist families who have children aged 0-5 with various community programs such as Better Beginnings, Sardis Doorway, and Family Place



### JUST B4 PRESCHOOL

Is an emergent, play-based preschool for 4-year-olds heading into Kindergarten the following year





## Overview

The Early Years Family Navigator program connects with families who have children aged 0-5 through various community programs.

## Key Community Programs

- Better Beginnings
- Sardis Doorway
- Family Place
- StrongStart Locations
- Little Explorers Play Groups

## Responsibilities of the Family Navigator

### • Connecting Families with Community Resources

Helping families access vital resources that support early childhood development and family well-being.

### • Navigating Provincial and Federal Programs

Guiding families in understanding and accessing available programs designed to support their needs.

### • Parenting Education

Providing resources and education to help families access parenting programs in our community.

### • Kindergarten Support

Assisting families with kindergarten registration challenges to ensure every child can enroll successfully.

For more information or to connect with our Family Navigator, please contact:

Amber Mothus (604) 793-5310  
amber\_mothus@sd33.bc.ca





Chilliwack  
School District

# Little Explorers



Drop-in and Play!!

For Guardians with their children birth-5 years old

11:45am to 1:30pm

Mondays & Thursdays at Vedder Elementary

Tuesdays & Fridays at Robertson Elementary

**Follow Us on Facebook for Program Information**

**SD33**

**EARLY LEARNING  
& CHILD CARE**







# Chilliwack Youth Health Centre

We provide free and confidential counselling and medical services to youth ages 12-26

## Neighbourhood Learning Centre (NLC)

46361 Yale Rd. - Room 1006

### Counselling:

Tuesday's, Wednesday's, and Thursday's from 1-7pm (last drop in 5:30pm)

### Medical:

Tuesday's For availability contact Christa at [medicalcyhc@gmail.com](mailto:medicalcyhc@gmail.com)

**Bus Route:** 51 Vedder, 53 Chilliwack & 71 Agassiz/Harrison

## Ch'íyáqtel First Nation

45855 Promontory Rd.

### Counselling:

Tuesday from 3-7pm (last drop in 6pm)

**Bus Route:** 51 Vedder, & 52 Evans

## Stó:lō Wellness Centre

Portable #1A-7201

Vedder Rd.

### Counselling:

Thursday's from 1-7pm (last drop in 5:30pm)

### Medical:

Thursday's from 2-5pm (last drop-in at 4:30pm)

**Bus Route:** Bus route: 51 Vedder, & 55 Yarrow/Greendale

## Contact us!

Phone (call/text):

For NLC: 604-819-4603

For Stó:lō: 604-378-2599

E-mail:

[chilliwackyhc@gmail.com](mailto:chilliwackyhc@gmail.com)

Website:

[www.chilliwackyhc.com](http://www.chilliwackyhc.com)



Find us on social media by scanning the QR code!



# ADHD Education Day (virtual)

Hosted By The Provincial ADHD Clinic

**Friday, October 18, 2024 – 9:00 am to 3:00 pm**  
via Zoom Videoconferencing

**To attend Virtually, register via Zoom:**

[https://phsa.zoom.us/webinar/register/WN\\_TTUM8b\\_IQPyNwMpJ42Hgg](https://phsa.zoom.us/webinar/register/WN_TTUM8b_IQPyNwMpJ42Hgg)

You must register to attend virtually. Registration is FREE.

9:00-9:15	Welcome
9:15-9:45	ADHD Basics
9:45-10:30	Treatment and Management
10:30-10:45	BREAK (15 minutes)
10:45—12:00	Parenting
	School & Executive Functioning
12:00-12:45	LUNCH BREAK (45 minutes)
12:45-1:15	Mindfulness
1:15 – 1:35	Caregiver Shift, Resources, Support
1:35-2:05	ADHD and Self-Regulation
2:05-2:20	BREAK (15 minutes)
2:20-2:50	Panel Discussion
2:50-3:00	Closing



Please Contact Joerg Taylor-Philippin at [adhdc@cw.bc.ca](mailto:adhdc@cw.bc.ca)  
or 604-875-2345 (ext. 2081) if you have any questions.



CHILLIWACK RESTORATIVE JUSTICE

# Accessible Halloween Village

\$5 Admission  
Buy Tickets Here



Event Sponsors



ROVANenterprises Ltd.

Washrooms  
Wheelchair Accessible  
Sensory Space  
Nut-free Treats  
Safe, Warm & Dry

Games – Prizes – Food Trucks

4:00 - 8:00pm

Central Elementary, 9435 Young Rd Chilliwack

Proceeds Support CRJ School Programs